

FAST *Fund*

Faculty and Students Together

**An economic
emergency fund
for MATC students**

INSIDE THIS REPORT

Donor Spotlights	4-5
Student Spotlights	6-7
Believe in Students Consortium	9
Number of Students Helped	15
Donors	16

TABLE OF CONTENTS

- 2** Board of Directors
- 3** Letter from Executive Director and Board President
- 4** Donor Spotlight – Dee Elliot
- 5** Donor Spotlight – Jan & John Carroll
- 6** Student Spotlight – Shymeka Brown
- 7** Student Spotlight – Anallely Guadaramma
- 8** FAST Fund Works
Making a Difference: FAST Fund donates laptops to MATC students
- 9** Believe in Students Consortium
24-Hour Bike Ride Fundraiser
- 10** Student Testimonies
- 13** FAST Fund Impact Statements
Milwaukee Diaper Mission Collaboration Update
- 14** Garden Party
Community-Driven Project Grant Update
- 15** Spending Charts
Student Needs
- 16** Corporate and Community Donors
Individual donors

MISSION STATEMENT

The Local 212 FAST Fund mission: To provide Milwaukee Area Technical College students experiencing economic emergencies with rapid financial support and to promote public and MATC policies on issues impacting MATC students so they remain enrolled and achieve academic success.

Believe in Students **FA\$TFund** **BOARD OF DIRECTORS**

President: Barbara Toles, *State Representative district 17 (retired), SDC Board of Directors*

Vice President: Michael Rosen, Ph.D., *Founder and Economics Faculty, MATC (retired)*

Treasurer: Trent Muller, *Financial Consultant, Morgan Stanley*

Secretary: Bria Burris, *Program Integrity Specialist, City of Milwaukee Housing Authority and Housing Consultant, Community Advocates*

BOARD MEMBERS

Abdulhamid Ali, *Chairman and CEP, D.A.A.R Engineering*

Karen Bauer, *Staff Attorney, Legal Aid Society of Milwaukee*

Lisa Conley, Ph.D., *Natural Science faculty, MATC AFT Local 212 President*

Lynda Conyers, *President, The Milwaukee Times Weekly Newspaper Printing and Publishing*

Charlie Dee, *English and History faculty, MATC (retired)*

Main Masri, *Business Consultant*

Sandy Pasch, *Psychiatric nurse and State Representative, District 10 (retired)*

Latoya Sykes, *CEO, Our Next Generation*

Ann Wilson, *Manager Hillside Family Resource Center*

Maria Lara, *Insurance Agent - Country Financial*

Jasmine Mercado, *VP Commercial Lender, Spring Bank*

*Organizations listed for identification purposes only

STAFF MEMBERS

Carol Holley, *Coordinator*

Charlie Himburg, *Operations Coordinator*

CJ Iglinski, *Coordinator*

David Weingrod, *Coordinator*

Elsa Marks, *Advocacy Coordinator*

Laurie Drake, *Coordinator*

Jasmin Sanchez, *Case Management Coordinator*

Michael Rosen, *Coordinator*

Nicole Tudury, *Financial Director*

Elizabeth Franczyk, *Executive Director, MATC FAST Fund and Foreign Language faculty, MATC (part-time)*

*Thank you for
your generosity...*

Dear Friends and Supporters of
the Local 212 FAST Fund at MATC,

As we reflect on the 2023-24 school year, we are filled with gratitude for your continued support of the Local 212 FAST Fund at MATC. Your generosity has made a significant impact on the lives of countless students.



A Year of Growth and Impact

This past year, we provided emergency financial assistance to 2,617 students—an increase of 57% compared to the year before. While we're proud to meet this rising demand, it's a troubling sign that more and more students are being forced to turn to us for help just to stay enrolled.

We were also honored to host another successful Garden Party at Rick Harris's home. We extend our heartfelt thanks to Pay the Devil for providing the music, Uplands Cheese and Blakesville Creamery for the delicious food, and Tim Decker, Martha Bergland, and Honey Petal Farms for their generous donations.

We are incredibly proud of Liz Franczyk, who was interviewed by Emily Files at WUWM alongside a student, advocating for debt relief for scholarship recipients. This inspired the creation of the ReConnect program at MATC, which, unfortunately, has since been halted despite our efforts to change that.

Liz was also featured in AFT Voices, the national publication of the American Federation of Teachers, where she highlighted the human touch that the FAST Fund brings to its work.

We are grateful to Senator Tammy Baldwin for spearheading the award of \$500,000 in Congressionally Directed Spending to the FAST Fund. This significant funding will allow us to continue our mission of providing financial assistance to students in need.

To better serve our diverse student population, we launched our application in Spanish. This initiative has enabled us to reach and support even more students.

Some Additional Highlights:

- The AFT/Believe in Students Changemakers Fellowship saw its first full academic year, with fellows making strides in social justice advocacy and addressing issues like housing insecurity.
- Our Advocacy Director, Elsa Marks, launched our blog, providing a valuable source for students seeking information on resources, advocacy, and events
- In June 2024, Liz Francyk embarked on a 24-hour bike ride and challenged donors to pledge a dollar amount for each mile she rode. This unique fundraiser generated \$20,000 and sparked conversations throughout the community.

Your support has been instrumental in making these achievements possible. We are committed to continuing our work and ensuring that every student has the opportunity to succeed.

With sincere gratitude,

Lizbeth Franczyk
Liz Franczyk, Executive Director, FAST Fund at MATC

Barbara Toles
Barbara Toles, Board President, FAST Fund at MATC

In September 2024, Liz Franczyk transitioned from her role with the MATC FAST Fund to join the National Believe in Students organization, continuing her commitment to supporting students on a broader scale.

Donor Spotlight

DEE ELLIOT

The FAST Fund certainly attracts fascinating people. Take Dee Elliot. After she retired from MATC in 1997, she joined the American Red Cross as a Disaster Counselor and almost immediately was sent to Guam following the devastation of Super Typhoon Paka.

In her five years with the Red Cross she served in 25 disasters, Dee travelled all over the country, and only retired when her husband's health required her to care for him.

Service was clearly in her blood. After graduating from UW-Madison, she took a job at MATC teaching physical education. She participated in the 1969 strike with other Local 212 members, sacrificing numerous paychecks for the greater good of being treated as professionals and gaining flexibility in working with students.

Next, she transferred to what was then called the MATC Continuation School, where she worked as a counselor supporting students who had dropped out of high school and came to MATC to earn skills, regain credits, and graduate.

Dee continued working as a counselor in a program for low-skill high school grads to move them into college-credit programs, and then later with MATC's general student population.

She heard about the FAST Fund from a former MATC colleague who volunteers with the FAST Fund. "As soon as I heard about it, I knew the FAST Fund was the best use of my dollar," she says. She recalled that federal regulations prevented the MATC Financial Aid office from helping students in emergencies.

"I love that the FAST Fund gets direct relief to students immediately to keep them in school. It reminds me of the Red Cross. Plus," she adds, "there's no middle-man syphoning off precious resources or CEOs getting paid huge amounts."

Sixty years after she started, Dee Elliot is still serving MATC students.

“There's no middle man syphoning off precious resources ”



DEE ELLIOT, retired public educator



JAN AND JOHN CARROLL, FAST Fund Donors

Donor Spotlight

JAN & JOHN CARROLL

Service to their community has always been part of Jon and Jan Carroll's lives, so when they discovered the FAST Fund, they felt they had to contribute.

Jon and Jan met in college in the Twin Cities where he completed medical school and she nursing school. They settled in Milwaukee on the near west side in a community of activists, inspired by the Catholic Worker tradition of "living useful lives and helping others." They eventually moved to their Riverwest home of 34 years, raised two kids and now have six grandchildren.

Jan worked as a nurse at Mt. Sinai Hospital and Jon as a physician in the Sixteenth Street Community Health Center. Now retired, Jan has a new passion helping establish urban orchards in vacant lots to meet healthy food needs as well as training neighborhood residents to care for the orchards.

They discovered the FAST Fund through Jon's work at Sixteenth Street. "I came into contact with many immigrant students who were brought here by their parents," Jon explains. "The combination of poverty and legal status made

it extremely difficult for many of them to transition from high school to college." He was impressed by MATC's DACA Plus Scholarships and the FAST Fund because they both served this population. "The structure of the FAST Fund made so much sense because the people who best know the needs of students are their professors."

Jan adds that as their grandchildren have grown, they've become acutely aware of the large population of students who do not have the same safety nets that their kids and grandkids had. "It breaks my heart to see so many young people working so hard to finish school and get decent jobs who can get derailed by financial and logistical problems that we could easily help our kids with. We think it's important for us to contribute to a safety net for all students, not just our own."

Recipients of FAST Fund grants are glad they feel that way.

“The combination of poverty and legal status made it extremely difficult for many [students] to transition from high school to college.”



Student Spotlight

SHYMEKA BROWN

Shymeka Brown isn't afraid to change her goals or ask for help when she needs it. Both practices seem to be working as she progresses professionally.

She started college at MATC in the Dental Hygiene Program in 2021 but realized pretty quickly that she didn't enjoy it that much. Needing to take a year off for personal and financial reasons, she came back to school through MATC's Restart Program and began taking prerequisites to become a Licensed Practical Nurse (LPN).

At that time she had a very low paying job and needed help to buy a laptop and books. Her instructor told her about the FAST Fund, and she was amazed at how quickly the FAST Fund helped her out of that crisis. As she took more LPN courses and did well, she realized she could go even higher and become a Registered Nurse.

This year she needed to move out of her mom's home and get her own apartment. However, she didn't have the cash for a security deposit, so she contacted the FAST Fund again and was amazed that they helped her within 24 hours.

Now Shymeka is working full-time as an Administrative Assistant in an assisted living facility while attending nursing classes at MATC. But she is nowhere near satisfied. Her new goal is to become a Certified Registered Nurse Anesthetist (CRNA). "This won't be easy, and I won't have any social life for another three years, but I'm sure I can do it," she explains.

"Knowing that there are people who care enough to help me out has taken a lot of stress from my life and allowed me to set my sights higher," explains Shymeka. She says she has spread the word about the FAST Fund and has actually helped walk some of her classmates through the application process. Last fall, this very articulate young woman spoke about her experiences at the FAST Fund's Garden Party Fundraiser.

Nobody would bet against Shymeka becoming the first college grad in her family, becoming a CRNA and giving back to her community.

“They helped me by paying my WE Energies bill and helping with my rent, so I could stay in school.”

Student Spotlight: **ANALLELY GUADARAMMA**

“If the FAST Fund hadn’t helped me, I never would have received my technical diploma,” says Anallely Guadaramma.

Anallely’s path to even be in a situation to need help was quite circuitous. Born and raised in Mexico, she came first to California then to stay with a Milwaukee cousin in 2008. She started taking ESL classes at MATC in 2012 that helped her obtain work. She hoped to come back to MATC to pursue additional education, but she had her son and daughter to raise. As a result, she didn’t return to MATC till 2021. She took General Education courses because she wasn’t sure what she wanted to do.

Eventually she entered the Bilingual Office Assistant program. She liked it a lot, but she had some hurdles to get over to complete it. As a single mom with two kids, now 8 and 11, she had a challenge to pay her rent and electricity bills one month and feared she’d need to drop classes. But she had joined the MATC student organization, Latin X Unidos, and one of the leaders told her about the FAST Fund. “They helped me by paying my WE Energies bill and helping with my rent,” she reports, “so I could stay in school.”

A year later, her car was stolen. She desperately needed it to get to school, work and get her kids where they needed to be. Police located the car, but it was so damaged that she couldn’t drive it. She contacted the FAST Fund again. “It was amazing,” she says. “They told me about a mechanic who would help me, a former MATC auto instructor, and then paid the bill when my car was fixed!”

Now she has transitioned to working as bilingual teachers aid in the United Community Centers’ elementary school and absolutely loves working with the kids. Her new plan is to get back to MATC or UW-Milwaukee to get a degree in Education. Nobody in her family has ever gone to college before. “Both my family in Mexico and my kids are so proud of me,” she says. With good reason.



MAKING A DIFFERENCE: *FAST Fund donates laptops to MATC students*

"Having extra support at school and access to technology can seriously level the playing field in school. It's like having the tools to not just keep up, but actually get ahead and make the most of learning. Thanks to the FAST Fund, and its partnership with the Milwaukee Diaper Mission and Unitedway. I was able to stay on track and make real progress in my education. Their support made a big difference in my journey."

– Sade Finch



FEDERAL COMMUNITY DRIVEN PROJECT GRANT: Senator Tammy Baldwin *secures second community-driven project grant for the FAST Fund*



The Local 212 FAST Fund at MATC received a \$500,000 community-driven project grant in the federal government's bipartisan funding packages signed into law in April. Wisconsin Senator Tammy Baldwin, a member of the Senate Appropriations Committee, secured this funding that will be used to assist MATC students experiencing basic needs insecurity.

"The FAST Fund is so grateful for this funding from Senator Baldwin. She clearly recognizes the realities for

Wisconsin community college students and the basic needs emergencies they face," said Liz Franczyk, Executive Director of the FAST Fund.

Milwaukee has experienced the second fastest increase in rents in the nation as out-of-state investors buy Milwaukee homes and drive-up rents. This has dramatically increased the cost of pursuing an MATC education, especially for students who are parents. When the FAST Fund began in 2016-17, student rents ranged from \$750 to \$950. Today students rarely see rents for less than \$1,200. Baldwin's community-driven project grant will allow the FAST Fund to help students keep a roof over their heads and relieve the stress associated with the threat of eviction. It will also be used to help students put food on the table, the lights and internet on, purchase the text books they need, or pay a small debt to the college so they can enroll in classes.

Last year (2022-2023) the FAST Fund provided assistance to 2,451 MATC students, a 47% increase over the previous year. 89% of the student we assisted graduated, remain enrolled at MATC, or are continuing their education at another college or university.

This is the second federal community driven project grant the FAST Fund has received. A year ago Congresswoman Moore secured the organization a \$250,000 grant.

BELIEVE IN STUDENTS CONSORTIUM:

Great Lakes region Fast Funds receive a \$150,000 grant



BELIEVE IN STUDENTS CONSORTIUM: MATC students, Marz Ezeji, John Williams and Elsa Lysette pose with FAST Fund director, Liz Franczyk.

The Local 212 FAST Fund at MATC's mission extends beyond providing emergency assistance: we empower students to become advocates for themselves and their communities. Through programs like the Believe in Students Changemakers Fellowship and strategic partnerships, we equip

students with the skills to address basic needs insecurity and to drive systemic change.

In our last annual report, we reported on hosting AFT President Randi Weingarten at Local 212, where she announced a \$150,000 grant for a consortium of FAST Funds in the Great Lakes region. This funding not only provided direct aid to students but also fostered collaboration between students and faculty to raise awareness about basic needs insecurity and build solidarity across campuses.

Nearly half of all college students struggle to meet their basic needs, experiencing food and housing insecurity at much higher rates than the general population. For many, even a small unexpected expense can lead to missed classes, incomplete courses, and dropping out with debt and no degree. The Changemakers Fellowship empowers students to address these

challenges by providing leadership training and advocacy opportunities to champion solutions that matter to them.

This year, MATC students Elsa Lysette, John Williams and Marz Ezeji participated in the Fellowship, focusing on improving student housing. They conducted research, collected testimonials, and presented findings to MATC leadership, bringing critical student perspectives to the table. Their work demonstrates the power of student voices in shaping institutional change.

By listening to students and creating opportunities for them to lead, Believe In Students and the FAST Fund are transforming higher education to better support today's diverse student population. Together, we are building a movement where advocacy drives systemic change one story, one initiative, and one community at a time.

24-HOUR BIKE RIDE FUNDRAISER: *Fast Fund Director raises funds for MATC students*

When John Williams decided to enroll at Milwaukee Area Technical College, he didn't anticipate the support he would receive from a faculty member outside his major.

On June 14, that instructor – Liz Franczyk – will mount her bike for a 24-hour ride, with the goal of raising money for MATC students like Williams. "If someone's willing to go ride a bike for 24 hours to show they care for us, and they're willing to raise money for our welfare, that feels amazing," Williams said.

Franczyk is the executive director of The Local 212 FAST (Faculty and Students Together) Fund at MATC, an emergency fund for students experiencing economic emergencies.

The hope is that by providing a small amount of money on short notice, students who might otherwise drop out of technical college because of financial difficulties are able to graduate.

Liz Franczyk, executive director for FAST Fund and adjunct instructor at MATC, plans to bike for 24 hours to fundraise for the FAST Fund, an emergency fund for MATC students experience economic emergencies.

Most students use the funds to pay for past-due debt with MATC or to cover surprise housing costs. Students are often unaware of their debt at MATC, Franczyk explained, until they try to re-enroll for the next semester.

MATC professor Michael Rosen and



LIZ FRANCZYK, FAST Fund Director

Temple University professor Sara Goldrick-Rab launched the fund in 2016, after Goldrick-Rab published a book documenting the price that students pay for college. That year, FAST Fund helped 26 students. This year, Franczyk estimated the fund will help 3,000 students using almost \$1 million of aid.

STUDENT TESTIMONIES



"Due to my past mistakes and an outstanding balance, I had lost hope of returning to MATC. Fast Fund has helped me immensely by providing the financial assistance I needed to resume my college education. With the help of Fast Fund, I can now register for classes and I am one step closer to obtaining my Early Childhood Education Degree. Thanks, Fast Fund, for your support."

- Ledena Ford
Early Childhood Education student



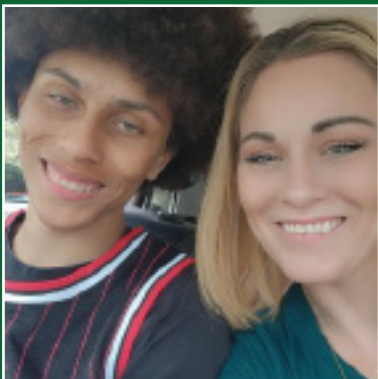
Hi. My name is Amanda. I am attending Milwaukee Area Technical College pursuing my Nursing Degree. I applied and received assistance from Fast Fund. I just moved to Milwaukee & I've had a rough time and needed help with my rent. I have a part time job & I'm really trying to adjust to a new state & focus on my classes. Elsa helped me through the process and is a really cool, down to earth person. I truly appreciate the help from Fast Fund. It's definitely a major blessing.

- Amanda
Nursing student



Dear FAST Fund Team, I want to express my deep gratitude for the assistance I received from the FAST Fund to help cover my medical bill. The expense was overwhelming for me, and it caused a great deal of stress that negatively affected my mental health and, in turn, my studies and academic performance. Your support has lifted a huge burden off my shoulders, allowing me to focus more on my education without the constant worry. Thank you so much for your help. I'm truly grateful for the impact you've made.

- Hein Htet Aung,
Anesthesiology student



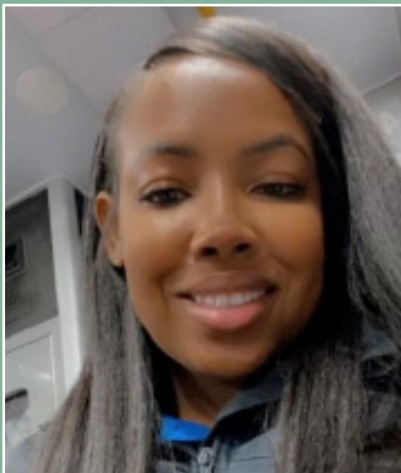
"My name is Brittany, and I am currently a student at MATC in the funeral services program. I had run into an unexpected financial situation regarding my funding for school. I was 8 weeks into classes and stuck with an issue that I was unsure how I was going to manage. I was very stressed that it was hard for me to focus on my classes because I needed to focus on how I was now going to come up with money to pay for school and my bills. Seeking every avenue, asking for guidance and help, I came across the Fast Funds site for students like me.

Being a single mom in school is stressful enough but adding such an unexpected and unplanned turn of events that caused me to seek assistance was difficult and frustrating to manage. I didn't know how I was going to pay for my classes, and I was afraid of losing my house. It was difficult trying to focus on my classes at this time. Fast Funds offered me help in offering a specific amount of money towards my house payment. They knew it wasn't enough to cover and felt remorseful they couldn't do more, but the realization was that amount helped me to relieve some of my anxiety and gave me a bit of hope to keep moving forward. It gave me the opportunity to remain strong and have faith things will eventually work out and I was able to focus more attention onto my classes.

Their generous donation has helped me immensely and gave me the strength to keep fighting and working hard to pursue what I want. I want to say thank you to Fast Funds and all the donors that have graciously donated to this business to help me in a time of need. I am so appreciative of this gift and hope one day I can pay it back for another student that will need it.

- Brittany, Funeral Service student

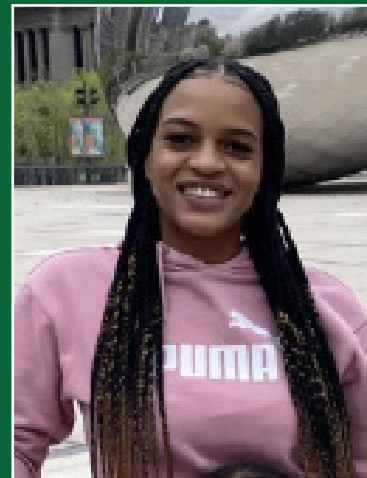
STUDENT TESTIMONIES



I am a first semester nursing student and this semester has been a learning process and adjustment to say the least. While being a mom, wife and full-time student I had to limit work to focus on my success in school. I found myself in financial need as mommy and school had my full attention.

I missed a day of class trying to navigate getting my car fixed as I was involved in a fender bender with my children. As I reached out to a professor to make her aware of my absence she shared the fast fund information with me. I was able to apply and received a call the next day from Carol who further assisted me. I am so appreciative of MATC, the fast fund and the constant support and resources available to me. I can attend class next week with a little more ease knowing there are people who are routing for me and willing to assist me in my time of need. Thank you!"

- Erica Peet
Nursing student



My name is Katherine. I'm reaching out to simply say thank you for the donated funds. This program has helped stay focused on the things that matter, school. The program has assisted me with car payment to be able to have transportation to and from school. The people that run it, all donate from the kindness of their heart. Once I complete my schooling & find some stability, I too plan to pay it forward. I am very thankful for the program. - Katherine, Nursing Program

- Katherine
Nursing student

**"I truly appreciate the help from Fast Fund.
It's definitely a major blessing."**

- Amanda

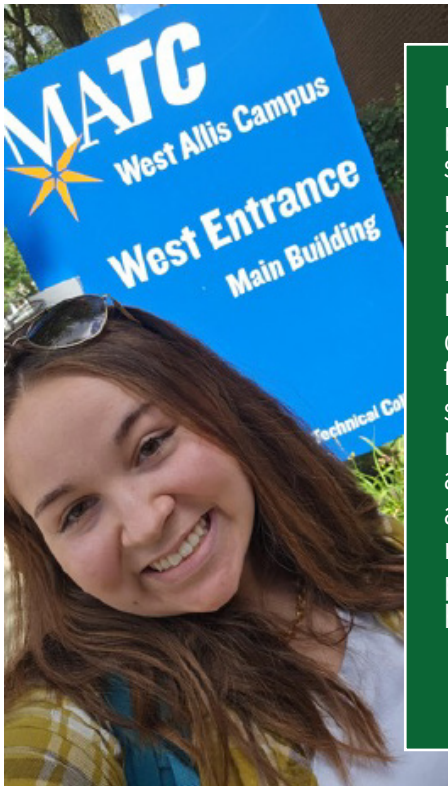


I am in tears right now, you just don't know how grateful I am right now. Thanks to your help, I was able to avoid dropping any classes and find more work opportunities that fit my schedule. This support has made a significant difference in my life, allowing me to focus on my studies while also taking care of my children. I am now on track to complete my last semester at MATC, and I couldn't have done it without your generosity and understanding. Your commitment to helping students like me achieve

their goals does not go unnoticed. I am truly grateful for the impact you have had on my education and my family's well-being. I look forward to finishing my program and making the most of the opportunities that lie ahead, all thanks to your invaluable support. I hope to be a donor one day soon.

- Natasha Edwards





Hi, My name is Sophia Walkner and I am a 2024 recipient of a FAST fund. Above is the photo of me on my first day of school in the Funeral Service Program at MATC. I was so excited to be finally pursuing my dream degree. I started my chapter at MATC by relocating on my own with no support, and job searching for months. I found myself in extreme financial distress. I ended up moving back to my hometown for cheaper rent and returned to my former factory job to get some income towards the apartment. Managing being a full time student and a full time employee is stressful enough without the financial stress and worries of finding a sublesser for the apartment, affording food, gas, and utilities. I considered backing down from my dream to solely focus on surviving. I looked through my school resources as a last resort and discovered the FAST fund application and applying was the best decision I have made. This program allows me to get back on track with rent before someone else is able to move in, and I am able to continue my schooling so I can pursue a degree that will positively impact my future. I am very appreciative of this opportunity that has been graciously made possible by donors to allow myself and others like me to regain stability to continue higher education. Eternally appreciative,

- Sophia Walkner

MATC Funeral Service Program - Class of '26

STUDENT TESTIMONIES

*"Thank you so much! My name is Amir and this is my very first time going into college! Liberal Arts, is what I'm taking! And with this laptop I'll be scoring higher levels of prosperity with it
Again, thank you..."*



*Thank you so much
for donating the
Laptop. I'm in school
for cooking and really
needed a Laptop
you guys really help
me out. God Bless
you
B. Single*

*Thank you for the
help with a laptop
for school. I'm in
Health Care field. I
so thankful for the help!
Keep up the good work!!*

*We are in a difficult political stage
and seeing that there are still
people who help comfort my heart
and soul. Thank you for all your
help, God bless you.*

- Veronica Herrera Solis
ESL MATC Student



John Williams on the impact of the FAST Fund: "If someone is willing to go ride a bike for 24 hours to show they care for us, and they're willing to raise money for our welfare, that feels amazing."

Liz Franczyk on the importance of supporting students: "And if we're not setting them up for success, then I think, as a community, we're doing them an injustice."

Liz Franczyk, Executive Director of the FAST Fund: "As faculty, we're the ones who see [the students] struggling. My working environment is their learning environment, so we can all advocate for one another. It's a little bit of art; it's a little bit of science." *(Describing the process of determining fund eligibility)*

CJ Iglinski, FAST Fund volunteer: "You feel like a fairy godmother at times." *(Describing her role as a case manager)*

John Williams on his experience with the FAST Fund: "(The FAST Fund) opened up doors for me. It kept me in school when I was thinking about dropping out and going back to work. Just her (his case manager) reassuring me that I have people who actually cared about my education and my future and my well-being, it made me ... not give up on myself or my dreams."

THE FAST FUND COLLABORATES WITH THE MILWAUKEE DIAPER MISSION AND THE MATC STUDENT RESOURCE CENTER

At the FAST Fund, we believe in the power of community to uplift students and remove barriers that stand in the way of their success. Our partnerships with the Milwaukee Diaper Mission (MDM) and the MATC Student Resource Center (SRC) exemplify this mission-driven commitment to collaboration.

In 2023 MDM started by providing 5,000 diapers a month to the partnership.. That was increased to 10,000 diapers and added period products. These are

easily accessible to students at MATC's Student Resource Center.

FAST Fund Executive Director Bria Burris praises this partnership. "Together, we work as a 'village,' united in purpose, to address the immediate needs of our student body and empower them to focus on their education without the weight of unmet basic needs," says Burris.

"The average age of an MATC student is between 28-32," explains Haley Weber,

the Manager of the SRC, "so our students often have families, jobs, and personal life commitments that compete with their studies for their full attention." Weber knows that traditional safety nets fail to address many of MATC students' needs. "The partnership between the FAST Fund, MATC, and MDM helps fill this particular gap, ensuring that no student has to choose between their education and necessities like diapers, period products, or food. This collaborative approach is a lifeline for many students. We hear daily the impact that having free diapers has for our students. We will continue to advocate for their basic needs to be met – luckily the FAST Fund has partnered with the Milwaukee Diaper Mission and the Student Resource Center to meet those needs at MATC," adds Weber. She concludes that the program "is a testament to what can be achieved when we work together to meet students where they are and help them thrive."



NATASHA EDWARDS, won a small raffle within the FAST Fund! A basket of baby bath products from the Milwaukee Diaper Mission.



THE FAST FUND WORKS

The FAST Fund is extremely effective. 89% of the students we assist graduate or continue their education at MATC or another college or university.

The FAST (Faculty and Students Together) Fund was organized by the American Federation of Teachers Local 212 in 2016 because we understood that basic needs insecurity was the single biggest reason MATC students did not complete their education. The FAST Fund's goal is to provide quick, financial assistance to MATC students experiencing economic emergencies, so they stay enrolled and graduate. The assistance is provided to students just-in-time, and is intended to reduce or eliminate financial challenges and associated stress so students can focus on learning. To understand the effectiveness of the FAST Fund's work, we conducted an online survey that was administered to the 1,579 FAST Fund students who applied for aid during the academic year 2022-2023. As in the previous year, the survey revealed that 89% of the students we helped, graduated or are continuing their education.

The students reported that the greatest areas of need were rental assistance and paying MATC tuition debts. Rents in the Milwaukee area are among the fastest growing in the country. Financial aid and the estimated cost of attendance which estimates housing costs have not kept up with increases in rents. MATC does not allow students to continue their education if they owe the college money from the previous semester unless they pay a third of the debt and agree to payment plan. These two areas accounted for 49% of all FAST Fund aid in 2022-23. Other areas of significant support were transportation, textbooks and utilities.

The survey also includes federal state and MATC policy recommendations that would result in increased student success rates.

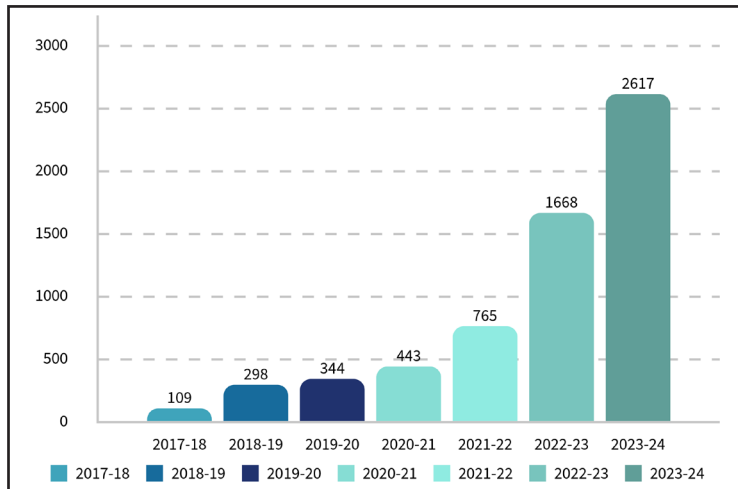
READ THE SURVEY HERE: https://www.matcfastfund.org/_files/ugd/4ef2fc_c63a3f36b3124333b7327cf14b04ce30.pdf

2023 GARDEN PARTY: MATC Faculty and Staff raise funds for students

The FAST Fund's 2nd annual garden party was held at the lovely Bayside home of Rick Harris, a retired MATC sign language interpreter. Milwaukee Mayor Chevy Johnson announced the city of Milwaukee's \$200,000 contribution to the FAST Fund to help provide emergency grants to MATC students.



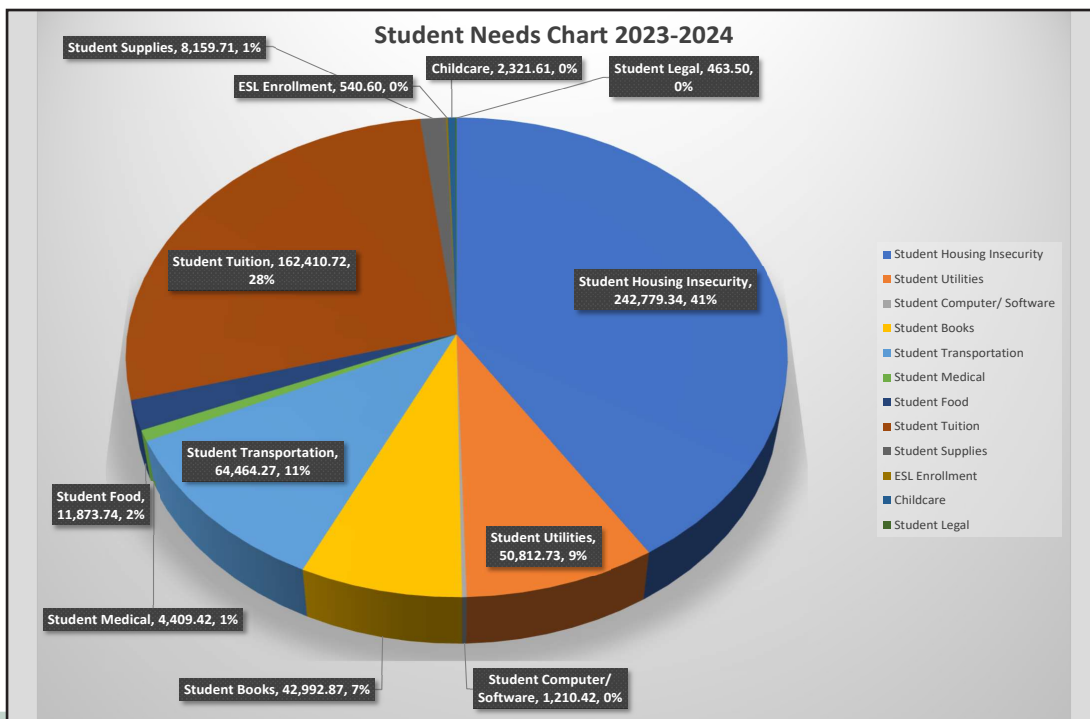
NUMBER OF STUDENTS HELPED



FAST FUND INCREASES 2021-2024

Student Need Category	# of Students Helped in 2021-2022	# of Students Helped in 2022-2023	# of Students Helped in 2023-2024	Dollar Amount in 2021-2022	Dollar Amount in 2022-2023	Dollar Amount in 2023-2024
Tuition	184	450	509	\$62,508.41	\$140,797.00	\$162,410.72
Housing	157	287	543	\$66,642.13	\$117,964.22	\$242,779.34
Books/ Supplies	157	192	201	\$28,744.53	\$39,888.33	\$52,363.00
Transportation	75	186	212	\$25,807.64	\$44,916.78	\$64,464.27
Utilities	46	164	187	\$10,754.22	\$45,449.00	\$50,812.73
Computers	74	143	—	\$12,479.51	\$22,636.79	—
Food	40	55	140	\$3,107.98	\$5,650.00	\$11,873.74
ESL	16	23	29	\$156.00	\$264.60	\$540.60
Medical	4	12	13	\$2,000.00	\$5,033.76	\$4,409.42
Childcare	12	7	6	\$2,814.50	\$2,897.10	\$2,321.61
Legal	—	4	1	—	\$1,350.00	\$463.50
Outside Leveraged	—	145	114	\$92,884.18	\$98,441.00	\$80,837.50
Laptops Leveraged	—	—	662	—	—	\$99,300.00
Total	765	1668	2617	\$307,899.10	\$525,288.58	\$772,576.43

23-24 PERCENTAGE OF FUNDS DISTRIBUTED BY NEED CATEGORY AND YEAR



INDIVIDUAL DONORS

Donations by Contact for the period of 07/01/2023 to 06/30/2024

Contributions \$10,000 and Above

Christine Symchych and James McNulty

Contributions \$3,000-\$9,999

Anonymous
Philip Blank
Ann Burbach
John and Jan Carroll
Dee Elliot
CJ Iglinski
Gregory and Diane Lemmers
Duane McAllister
Fred Tabak

Contributions \$1,001-\$3,000

Abdul Ali
Joan Allegretto Ewig
Martha Bergland
James Carpenter
Margaret Crowley
John and Judy Dawson
Charlie Dee
Anonymous Donor
Laura Drake
Will Edwards
Patricia Garrity
Peter Goldberg
Joan and Jeff Hansen
Gregory Willie and Carol Holley
James Kaestner
Barry Mandel
Perry Nigh
Matthew and Marianne Robbins
Michael Rosen
Karen Schrage
Cathy Thum
Barbara Toles
Wayne Van Ert

Contributions between \$500-\$1,000

Sharon Boldt
Mary Buchel
Nicholas and Lenore Burckel
Ronald Clohessy
Lucy Cooper
Alea Cross
Seth Dee
Jennifer Doede
David Franczyk
Denise Gallope
Patricia Goldstein
Karen Guskowski
Thomas Guskowski
Eric Hagedorn
Richard Harris
David and Kathleen Herrewig
Joe and Judy Jakubiak
Joanne Johnson-Clauser
Mary Keefe
Maria Lara
Jennifer Larson
Martin Liddy
Cynthia McCormick
David McIntosh
Wilma McNamara
Alan and Nancy Meier
Mark Miller
Nancy Moews
Trent Muller
Kenneth O'Reilly
Sandra Pasch
Glorie Salas
Carlen Schenk
Patrick Small
Joshua and Bree Spencer
David Thomas
Anna Varley
Erich Zuern

Contributions up to \$500

Betsy Adrian
John Allen
Quorum Architects
Lauren and John Baker
Richard and Kathleen Baldwin
Bernard Bannon
Caroline Bartelme
Karen Bauer
Edwina Beanum
Felton Benton
Ruth Clauser and Raymond Bergwin
Anastasia Beznik Frieseke
Nancy Vrabec and Alistair Blacke
Jean Borkin
Mary Botsford
Fouad Boulaleh
Karen Braam Nook
Liz Brachmann
Elizabeth Brachmann
Jeanette Braun
Mary Bromwell
Christy Brown
Kathleen Brumder
Christine Burr
Bria Burris
Barbara Cannell
Pat Carr
John and Pam Carter
Cynthia Cherny
Traci Clark
David Cobb
Patricia Coccia
Richard Cohn
Lisa Conley
Lynda Conyers
Kate Cunningham
Ernest and Dana Davis
Anne DeLeo
Jean DiMotto
John and Suellen Domencich
Terry Dorr
Michael Dougherty
Tony Drake
Ruthann Driscoll
Jennie Ehrmann
Eva Eiseman
David Espinoza
Lisa Fabian Albert
Michael Felber
Barbara Franczyk
Ephraim Frankel
JoAnn Fritz
Sam Froiland
Lornett Gaines
Nancy Garrity
Meg Gleason
Richard and Lois Goldberg
Douglas Golden
Caroline Gomez-Tom
Alan Goodman
Heidi Gottwald
Eva Hagenhofer
Wendi Halstead
Paul Hanel
Laurie Hansen Cardona
Elizabeth Harris-Hodge
Lynnet Harvey
Brett Heaton Juarez
Tim Heeley
Arthur Heitzer
Anne Hesse
Marie Heyer
Roland Hoffmann
Maren Hoffmann Larsen
Karen Huske
Robert Iglinski
Sadique Isahaku
Brian Jakubowski
Michael Jelich
Steven Jensen
Beverly Johnson

Britt Justmann
Harold and Jean Kacanek
Drew Kanyer
Jethra Kapp
Mohammad Kasraian
Robert and Sandra Kattman
Cathy Kaye
Kerri Kelly Mikich
Lisa and Peter Koneazny
Fredrick and Karen Kreutz
Kathy and Thomas Kruse
Anne Landre
Debra Landry
Joanne Lange
Chris Larson
Charles and Martha Lavin
Joy Lehmann
Robert Lintereur
Christine Litwin
and Susan Lock
Steven Loevy
Jonathan Lohr
David Maass
Robert Malloy
L Maris
Asma Masri
Emily Matthews
Eva and Michael McCrossin
Michael and Karen McFadden
Patricia McFarland
Mary McKay
Stephanie McKennie
Lorraine McNamara-McGraw
Teodros and Delois Medhin
Gail Mentzel
Tammy Metzke
Michael and Jennifer Mikulay
Harold Miller
Lynne Milner
Michelle Mirhoseini
Jeff Mlagan
Jeffrey Moorbeck
Suzanne Moore

James Morgan
Robin Mosleth
Jacqueline Muirhead
Richard Muirhead
Pablo Muirhead
Dean Muller
Waleed Najeeb
Daniel Narvey
Allyson Nemecek
Veronica Neumann
Danica Olson
Linda Omahoney
Bara Omari
Karen Ordians
Joseph Oulahan
Bridget Paul
Leslie Peterson
Al Pickney
Marcella Placencia
Kay Pleyte
Marc Potochnik
Linda Presto
MaryAnn and John Prokop
Jacqueline Quirk
Patricia Ramdeen Anderson
Cheralyn Randall
Meredith Reeves Hill
Christine Reinders
Kathryn Reinhart
Mary Reinhart
Susan Richards
Cindy Richardson
Jean Richie
Cindy Richter
Peter Rickman
Kate Riordan
Carla Roden
Susan Ruggles
Mark Sachner
Salvatore Safina
Andrew Salm
Jasmin Sanchez
Ronald and Suzanne Schaling

Daniel Schley
Mary Schmidt
Judith Schneidewent
Steven Shea
Stacy Simenz
Luz Sosa
Bree Spencer
Angela Sprau
Mary Stebbins
Diane Steigerwald
Anne Steinberg
Susan Stickels
Eileen Stone
Michele Sumara
Emily Summers
LaToya Sykes
Georgia Sylke
James Thompson
Dianne Thompson
Alex Topping
Emily Vaill Pfaff
Angel Vega
Jill Warning
Sheldon Wasserman
Phyllis Wax
Allie Wayman
Dave Weingrod
Kristi Weisenburger
Michael Wendt
Edward Werstein
David Wesley
Samantha Westcott
Laura White
Heather Whitmill
Jolene Wierschke
James Williams
Barbara Wilson
Peggy Zacher
Alejandro Zamora Jr
Debra Zednik
Jill Zellmer

*some third party donations

FAST FUND GRANT INCOME

For the period of 07/01/2023 to 06/30/2024

GWEN MOORE

\$250,000

COUNTY OF MILWAUKEE

\$100,000

SASH

\$25,000

CITY OF MILWAUKEE

\$150,000

BADER

\$30,000

FOREST COUNTY POTAWATOMI COMMUNITY

\$15,000

CORPORATE AND COMMUNITY DONORS

For the period of 07/01/2023 to 06/30/2024

HERB KOHL FOUNDATION

\$10,000

FIRST UNITARIAN SOCIETY OF MILWAUKEE FIRST UNITARIAN SOCIETY OF MILWAUKEE

\$2,675.09

PRIME FINANCIAL

\$1,000

EDUCATORS CREDIT UNION

\$5,000

BELIEVE IN STUDENTS

\$2,500

GFWC SHOREWOOD WOMAN'S CLUB

\$1,000

SOUTHWEST KEY PROGRAMS

\$4,000

STATE FARM

\$1,500

SUMMIT CREDIT UNION

\$1,000

BRIA BURRIS

Executive Director

Local 212/MATC Believe in Students FAST Fund

700 W. State Street

Foundation Hall, 8th Floor

Milwaukee, WI 53233

414.522.4017

<https://www.matcfastfund.org/>**OTHER WAYS TO DONATE TO THE FAST FUND:****DIRECT TO CHARITY**

Did you know that if you are over the age of 70 ½ you can make donations to the FAST Fund directly from your traditional IRA? By making donations this way you avoid recognizing the distribution from your IRA as taxable income. This type of donation is called a, "Direct To Charity" or DTC. If you would like more information about this, we recommend you discuss this with your CPA and please reach out so we can help you make a donation while potentially also reducing your tax burden.

HIGHLY APPRECIATED STOCK

By gifting in this manner, you can avoid paying capital gains tax on stock that increased in value. To do this you would identify stock that you own in a taxable account (non-Retirement). For this strategy to be useful the stock should have increased in value from what it was when you originally purchased. You would then reach out to the FAST Fund to get instructions to transfer the shares directly to our account. In short, donate shares directly to the FAST Fund rather than selling them.

END OF LIFE

You can also include the FAST fund in your estate planning. This is done by simply naming the FAST Fund in your will or trust. This can be a great way to make a meaningful contribution to the group as a part of your legacy.

Please consider talking these strategies over with your attorney or CPA to make sure they are right for you and that you are doing them correctly.

FASTFund
Faculty and Students Together